

## Certificate of Analysis

### L-Tyrosine methyl ester

#### PurCert Standard

|                          |   |                     |             |
|--------------------------|---|---------------------|-------------|
| <b>Product Number</b>    | PSR46826  | <b>CAS No.</b>      | 1080-06-4   |
| <b>Brand</b>             | PureSynth                                       | <b>Lot No.</b>      | T46826T0525 |
| <b>Molecular Formula</b> | C <sub>10</sub> H <sub>13</sub> NO <sub>3</sub> | <b>Date of Mfg.</b> | May,2025    |
| <b>Molecular Weight</b>  | 195.22 g/mol                                    | <b>Date of Exp.</b> | April,2030  |

| Test                                 | Specification                           | Result   |
|--------------------------------------|---|----------|
| Description                          | White to Light yellow powder to crystal | Complies |
| Assay (BY HPLC)                      | ≥ 99.5 %                                | 99.96 %  |
| Water (By KF)                        | NMT 0.500 %                             | 0.3440 % |
| Identification by <sup>1</sup> H NMR | Conforms to structure                   | Conforms |
| Identification by MS                 | Conforms to molecular mass              | Conforms |
| Identification by IR                 | Conforms to structure                   | Conforms |

**\*Traceable to Internal Reference standard.**

**Storage Condition:** Store at room temperature and keep the container tightly closed.

**Remark:** The batch complies with the prescribed quality of the above specification.

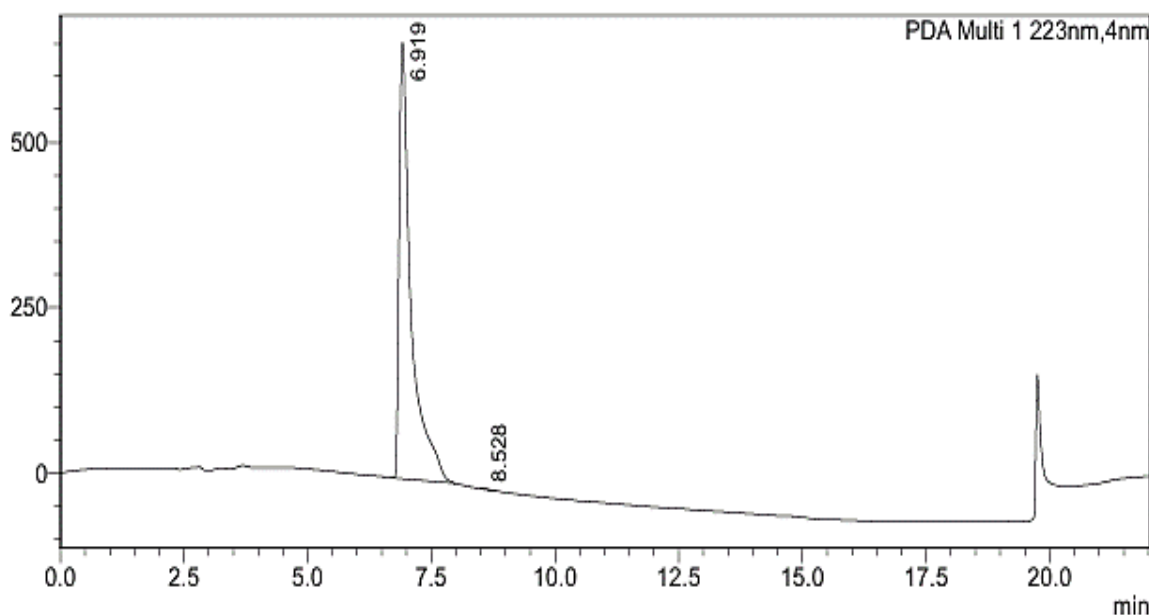
## Assay by HPLC

### <Sample Information>

Sample Name : L-Tyrosine methyl ester-T46826T0525  
Data Filename : CAS-AR25000726-L-Tyrosine methyl ester-T46826T0525.lcd  
Method Filename : shimpack-AA90-ACN-10-1.lcm  
Vial # : 2-36  
Injection Volume : 10 µL  
Date Acquired : 6/6/2025 3:28:48 PM  
Date Processed : 6/6/2025 4:05:48 PM

### <Chromatogram>

mAU



### <Peak Table>

PDA Ch1 223nm

| Peak# | Ret. Time | Area     | Height | Area%   |
|-------|-----------|----------|--------|---------|
| 1     | 6.919     | 11080169 | 660994 | 99.966  |
| 2     | 8.528     | 3726     | 38     | 0.034   |
| Total |           | 11083895 | 661032 | 100.000 |

**Purity by HPLC: 99.96 %**

## IDENTIFICATION TESTS

### MS Spectrum:

#### Mass by MS:

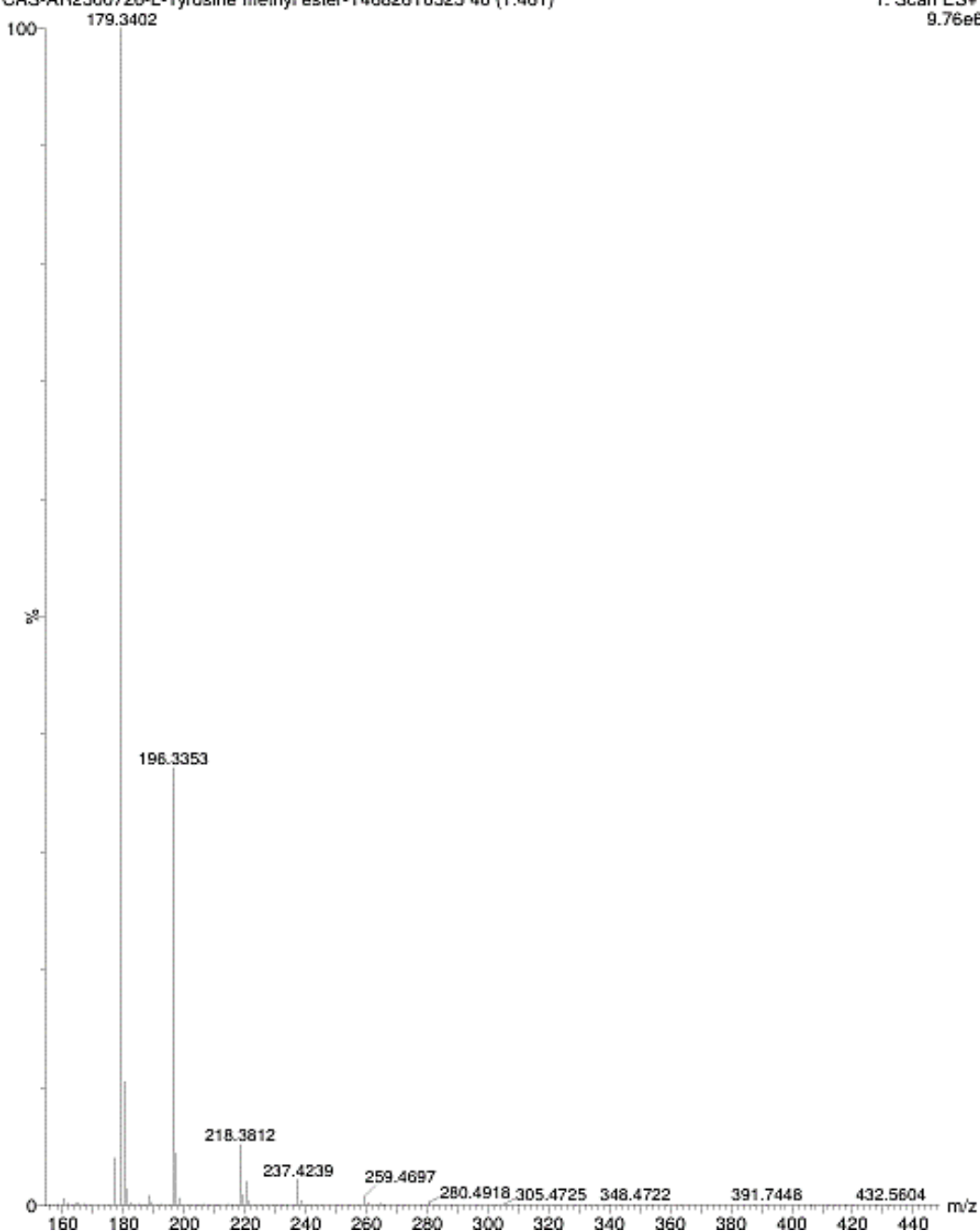
Product Name: L-Tyrosine methyl ester

Product Code: PSR46826

CAS-AR2500726-L-Tyrosine methyl ester-T46826T0525 40 (1.461)

07-Jun-2025 12:19:10

1: Scan ES+  
9.76e6



Identification by MS: Conforms to molecular mass

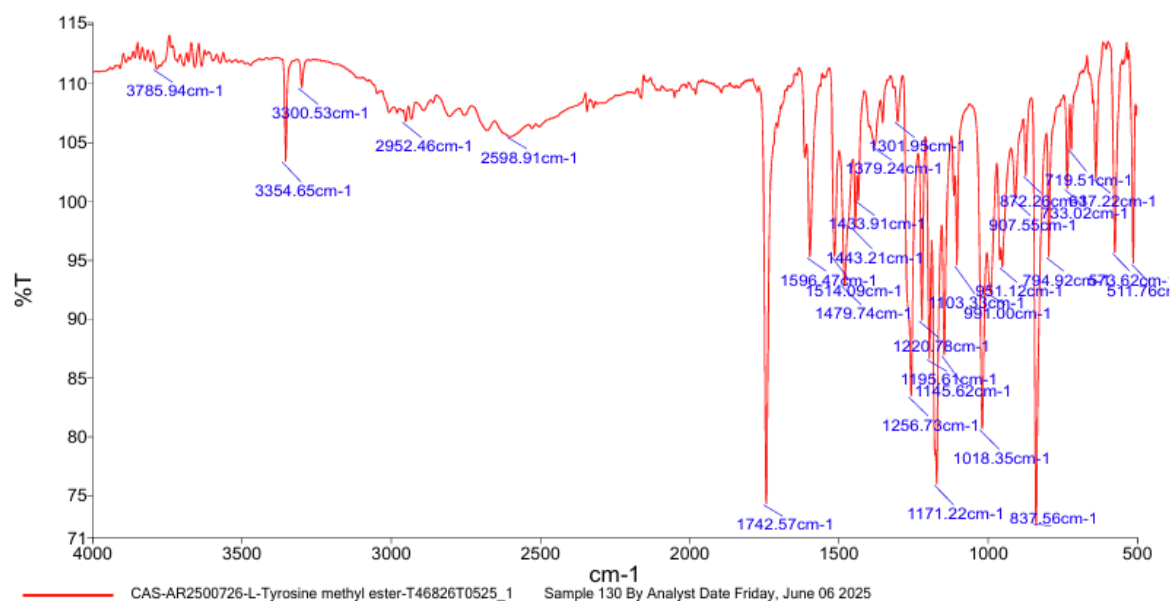
## Infrared spectrum:

**Product Name:** L-Tyrosine methyl ester

**Product Code:** PSR46826

Analyst

Date



| Source Spectra Results                              |                 |        |
|---|-----------------|--------|
| Spectrum Name                                       | Number Of Peaks |        |
| CAS-AR2500726-L-Tyrosine methyl ester-T46826T0525_1 | 41              |        |
| List of Peak Area/Height                            |                 |        |
| Peak Number   | X (cm-1)        | Y (%T) |
| 1   | 3785.94         | 111.31 |
| 2   | 3696.19         | 111.60 |
| 3   | 3659.73         | 111.45 |
| 4   | 3636.31         | 111.56 |
| 5   | 3354.65         | 103.47 |
| 6   | 3300.53         | 109.74 |
| 7   | 2952.46         | 106.84 |
| 8   | 2598.91         | 105.54 |
| 9   | 2343.95         | 107.69 |
| 10  | 2049.95         | 108.89 |
| 11  | 1893.21         | 109.29 |
| 12  | 1742.57         | 74.32  |
| 13  | 1613.74         | 103.75 |
| 14  | 1596.47         | 95.32  |
| 15  | 1514.09         | 95.39  |
| 16  | 1479.74         | 92.88  |
| 17  | 1443.21         | 97.77  |
| 18  | 1433.91         | 100.14 |
| 19  | 1379.24         | 104.78 |
| 20  | 1352.12         | 106.74 |
| 21  | 1301.95         | 106.83 |
| 22  | 1256.73         | 83.50  |
| 23  | 1220.78         | 89.92  |
| 24  | 1195.61         | 86.66  |
| 25  | 1171.22         | 75.99  |
| 26  | 1145.62         | 86.98  |
| 27  | 1113.35         | 100.52 |
| 28  | 1103.33         | 94.63  |
| 29  | 1018.35         | 80.70  |
| 30  | 991.00          | 92.26  |
| 31  | 959.07          | 95.06  |
| 32  | 951.12          | 94.45  |
| 33  | 907.55          | 100.28 |
| 34  | 872.26          | 102.24 |
| 35  | 837.56          | 72.44  |
| 36  | 794.92          | 95.34  |
| 37  | 733.02          | 101.12 |
| 38  | 719.51          | 104.46 |
| 39  | 637.22          | 101.98 |
| 40  | 573.62          | 95.70  |
| 41  | 511.76          | 94.79  |

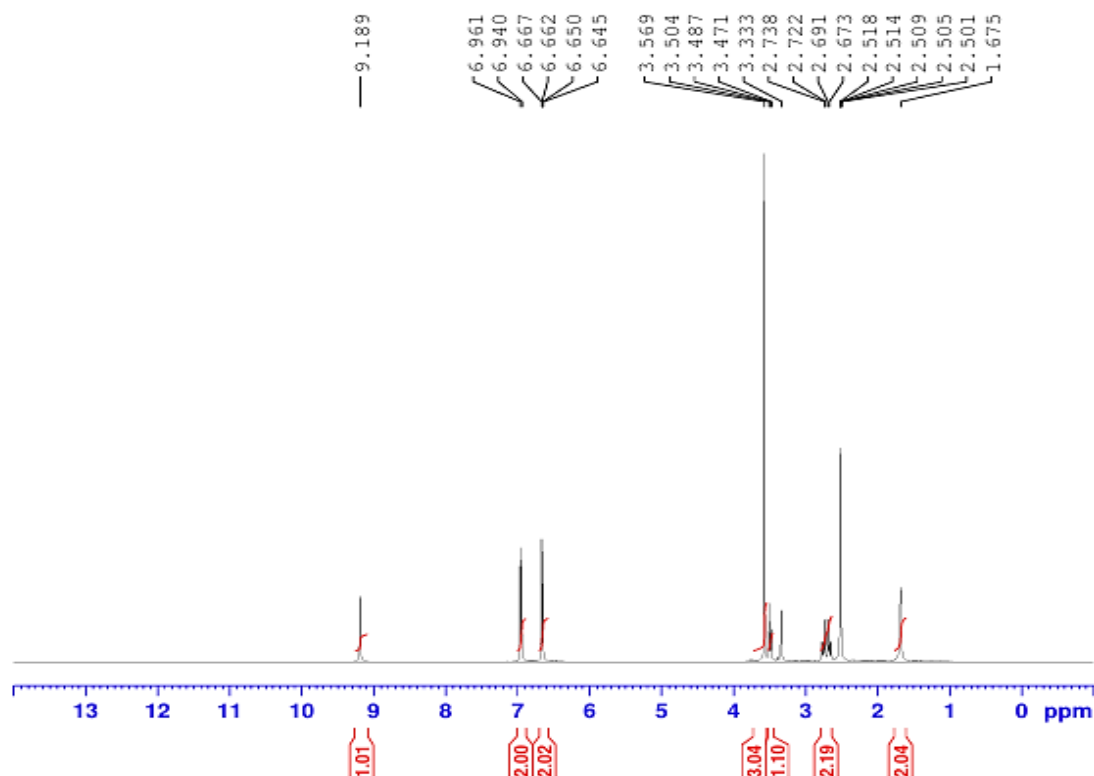
**Identification by IR: Conforms to structure**

### **<sup>1</sup>H NMR Spectrum:**

**Product Name: L-Tyrosine methyl ester**

**Product Code: PSR46826**

L-Tyrosine methyl ester  
Batch no-T46826T0525  
1H-NMR in DMSO



Identification by <sup>1</sup>H NMR: Conforms to structure

### **Maximum limits of impurities**

#### **WATER DETERMINATION**

Method: Karl Fisher titration

Water Content (PSR46826) = **0.3440 %**

Approved By  
Head - Technical

*This is a computer-generated report -does not required sign*